

2024-2025 Transition to A2L Compliant Models

Pre-A2L Models

Pre-A2L AC Product

13.4 SEER2 Single Stage
 14.3 SEER2 Single Stage
 15.2 SEER2 Single Stage

Series

DX3SQ/E
 DX4SQ/E
 DX5SE



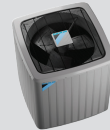
16.2 SEER2 Inverter

DX6VS



17.2 SEER2 Two Stage

DX7TC



19.2 SEER2 Inverter

DX9VC



Pre-A2L HP Product

14.3 SEER2 Single Stage
 15.2 SEER2 Single Stage

Series

DZ4S(Q/E)
 DZ5SE



16.2 SEER2 Inverter

DZ6VS



17.2 SEER2 Two Stage

DZ7TC



19.2 SEER2 Inverter

DZ9VC **TBA**

2024-2025 A2L Compliant Models

R-32 Transition AC Product

13.4 SEER2 Single Stage
 14.3 SEER2 Single Stage
 15.2 SEER2 Single Stage

Series

DC3SQ/E
 DC4SQ/E
 DC5SE



16.2 SEER2 Inverter

DC6VS



17.2 SEER2 Two Stage

DC7TC



19.2 SEER2 Inverter

DC9VS



R-32 Transition HP Product

14.3 SEER2 Single Stage
 15.2 SEER2 Single Stage

Series

DH4S(Q/E)
 DH5SE



16.2 SEER2 Inverter

DH6VS



17.2 SEER2 Two Stage

DH7TC



(NEW) 17.5 SEER2 Inverter

DH7VS



TBA

2024-2025 Transition to A2L Compliant Models

Pre-A2L Models

Pre-A2L 90% Furnaces Product

Product	Series
1 Stg 92% MS-ECM	DM92SN
1 Stg 96% MS-ECM	D(C/M)96SN
2 Stg 96% MS-ECM	D(C/M)96TN
1 Stg 96% ULN MS-ECM	DM96SN-U
1 Stg 96% ULN VS-ECM	D(C/M)96SC-U



2 Stg 96% VS-ECM	D(C/M)96VC
Mod 97% VS-ECM	D(C/M)97MC



Pre-A2L 80% Furnaces Product

1 Stg 80% MS-ECM	D(C/M)80SN
1 Stg 80% ULN MS-ECM	DM80SN-U
2 Stg 80% MS-ECM	D(C/M)80TN
1 Stg 80% ULN VS-ECM	D(C/M)80SC-U
2 Stg 80% VS-ECM	D(C/M)80VC



2024-2025 A2L Compliant Models

90% R-32 Sensing Furn. Product

1 Stg 92% MS-ECM	DR92SN
1 Stg 96% MS-ECM	D(D/R)96SN
2 Stg 96% MS-ECM	D(D/R)96TN
1 Stg 96% ULN MS-ECM	DR96SN-U
1 Stg 96% ULN VS-ECM	D(D/R)96SC-U



2 Stg 96% VS-ECM	D(D/R)96TC
Mod 97% VS-ECM	D(D/R)97MC



80% R-32 Sensing Furn. Product

1 Stg 80% MS-ECM	D(D/R)80SN
1 Stg 80% ULN MS-ECM	DR80SN-U
2 Stg 80% MS-ECM	D(D/R)80TN
1 Stg 80% ULN VS-ECM	D(D/R)80SC-U
2 Stg 80% VS-ECM	D(D/R)80TC



2024-2025 Transition to A2L Compliant Models

Pre-A2L Models

2024-2025 A2L Compliant Models

Pre-A2L Coils Product

Series

Uncased Coil w/ Flowrater

CAUF/CAUFA



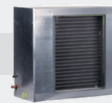
Vertical Cased Coil w/ Flowrater

CAPF/CAPFA



Horizontal Slab Coil w/ Flowrater

CSCF



Horizontal Cased Coil w/ Flowrater

CHPF



Vertical Cased Coil w/TXV

CAPT/CAPTA



Horizontal Cased Coil w/TXV

CHPT/CHPTA



Vertical Cased Coil w/ EEV

CAPE/CAPEA



Horizontal Cased Coil w/ EEV

CHPE

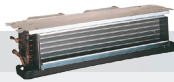


Pre-A2L Air Handlers Product

Series

Ceiling Mount Direct Drive Mutli Speed

ACSF



Wall Mount MS-ECM

AWST/F



Modular Blower VS-ECM

MBVK



1 Stg Multi Pos. 9 Tap ECM

AMST****1400



2 Stg Multi Pos. VS- ECM

DMVT****1400



FIT Inverter Comp. Multi Pos. VS-ECM

DFVE****1400

R-32 Transition Coils Product

Series

Uncased Coil w/TXV

CAUTA



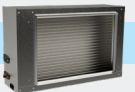
Vertical Cased Coil w/ Flowrater

CAPFA



Horizontal Slab Coil w/TXV

CSCT



DISCONTINUED

Vertical Cased Coil w/TXV

CAPTA



Horizontal Cased Coil w/TXV

CHPTA



Vertical Cased Coil w/ EEV

CAPEA



Horizontal Cased Coil w/ EEV

CHPEA

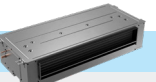


R-32 Transition Air Handlers Product

Series

Ceiling Mount Direct Drive Mutli Speed

ACST



Wall Mount MS-ECM

AWST



Modular Blower VS-ECM

MBVK



1 Stg Multi Pos. 9 Tap ECM

AMST****1300



2 Stg Multi Pos. VS-ECM

DMVT****1300



FIT Inverter Comp. Multi Pos. VS-ECM

DFVE****1300

FIT Inverter Comp. Multi Pos. VS-ECM (115V)

DFVE****0300

DISCONTINUED

2024-2025 Transition to A2L Compliant Models

Pre-A2L Models

2024-2025 A2L Compliant Models

Pre-A2L PKG Units Product

Series



R-32 Transition PKG Product

Series



13.4 SEER2 Horizontal - AC

DP3CH**4

13.4 SEER2 Multi-Position - AC

DP3HM**4

13.4 SEER2 Multi-Position - DF

DP3DM**4

13.4 SEER2 Horizontal - HP

DP3HH**4

15.2 SEER2 Horizontal - HP

DP5HH**4

13.4 SEER2 Multi-Position - HP

DP3HM**4

15.2 SEER2 Multi-Position - HP

DP5HM**4

13.4 SEER2 Multi-Position - GE

DP3(G/U)M**4

15.2 SEER2 Multi-Position - GE

DP5(G/M)M**4

13.4 SEER2 Horizontal - AC

DP3CH**3

13.4 SEER2 Multi-Position - AC

DP3HM**3

13.4 SEER2 Multi-Position - DF

DP3DM**3

13.4 SEER2 Horizontal - HP

DP3HH**3

15.2 SEER2 Horizontal - HP

DP5HH**3

13.4 SEER2 Multi-Position - HP

DP3HM**3

15.2 SEER2 Multi-Position - HP

DP5HM**3

13.4 SEER2 Multi-Position - GE

DP3(G/U)M**3

15.2 SEER2 Multi-Position - GE

DP5HM**3